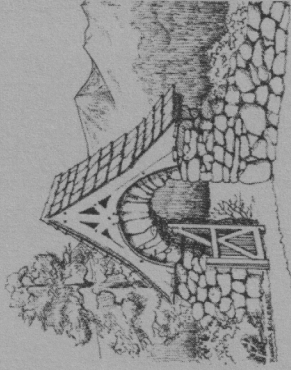


Park Rules

- Damaging, removing, or touching artifacts is prohibited.
- No food, drinks, strollers, backpacks, or baby packs are allowed in the house. Soft baby slings worn in front are permitted.
- Photographs are not permitted during the guided tour.
- No pets allowed in buildings
- Park is handicapped accessible under ADA guidelines, some restrictions apply.

Facilities

The park is a National Register Historic Site with a 6-acre wooded area, picnic tables, and restrooms.



Entrance to the front courtyard.

The **Veranda** and **Visitor Center** may be rented for special events & weddings. Contact the Park for details.

Partnerships

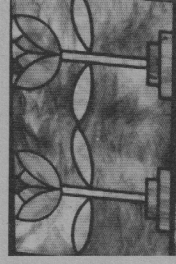
Riordan Mansion State Historic Park is open to the public thanks to a partnership between Arizona State Parks, the Arizona Historical Society - Northern Arizona Division, Northern Arizona Pioneers' Historical Society, and the Riordan Action Network.

Online Information

For current park days of operations, hours, and fees, as well as interactive driving directions, please visit our website: **AZStateParks.com/Parks/RIMA**

At the website, you may also watch an introductory park video and sign up for the monthly Parks Newsletter.

American Arts & Crafts Style



In the early 1900s, a new style of architecture, influenced by the Arts & Crafts Movement in England, became popular in the United States. A

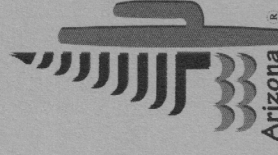
reaction against the excesses of the Victorian era and the giant factories of the Industrial era, this new philosophy emphasized simplicity, craftsmanship, and the beauty found in nature. The new architectural designs included open floor plans, exposed structural elements, walk-in closets, and built-in storage features. Buildings were supposed to blend into the natural landscape, using locally available materials, and celebrate local cultures and traditions. A uniquely American blending of the natural environment with the melting pot of cultures resulted.

Riordan Mansion exhibits these ideas with log slab siding covering the frame-built structure, lending a rustic appearance to the home. Log ends protrude at eaves and corners to further the illusion of log construction, and local volcanic rock forms the base, chimneys, and arches. The common room between the two homes is intended to be a large, welcoming social area and continues the rustic look with exposed, log-supported ceiling beams. The inside of the homes have elegant interior formal spaces which feature plaster walls, wainscoting, built-in bookcases, window seats, and beautiful wooden light fixtures. Skylights and stained glass spread natural light throughout the open floor plan.

Arizona State Parks
1300 W. Washington
Phoenix, Arizona 85007

Phone & TTY (602) 542-4174
Toll Free (800) 285-3703
from 520 & 928 area codes
Fax (602) 542-4180

Equal Employment Opportunity Agency. This document is available in alternative formats. Contact the ADA Coordinator at (602) 542-4174.



AZStateParks.com

Riordan Mansion State Historic Park



**409 W Riordan Road
Flagstaff, AZ 86001
(928) 779-4395**

Built in 1904 for two Riordan families, **Riordan Mansion** is an impressive reminder of gracious living in a small, territorial logging town. The historic building is an Arizona treasure — a remarkable example of Arts and Crafts style architecture featuring a rustic exterior of log-slab siding, volcanic stone arches, and hand-split wooden shingles. The expansive home has forty rooms, over 13,000 square-feet of living area, and servants quarters. The Riordan residence was designed by Charles Whittlesey, architect of the Grand Canyon's El Tovar Hotel.

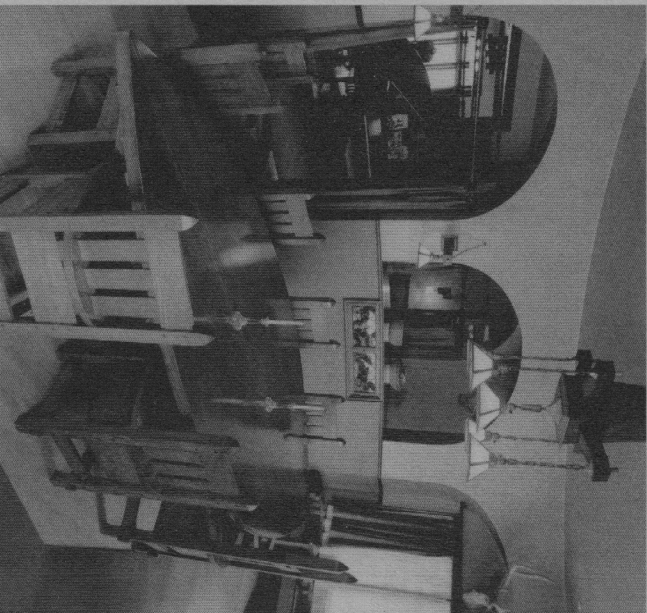
Guided Tours

The interior of the Mansion is seen by guided tour only. Tours begin on the hour and last approximately one hour. A tour guide will lead you through the East House; a pristine historical home filled with original artifacts, hand-crafted furniture, and personal mementos of the Riordan families. The tour concludes in the West House where visitors have the opportunity to wander the first floor exhibit area. **Reservations for the tour are highly recommended and required for buses and large groups.** Visit AZStateParks.com for current info.

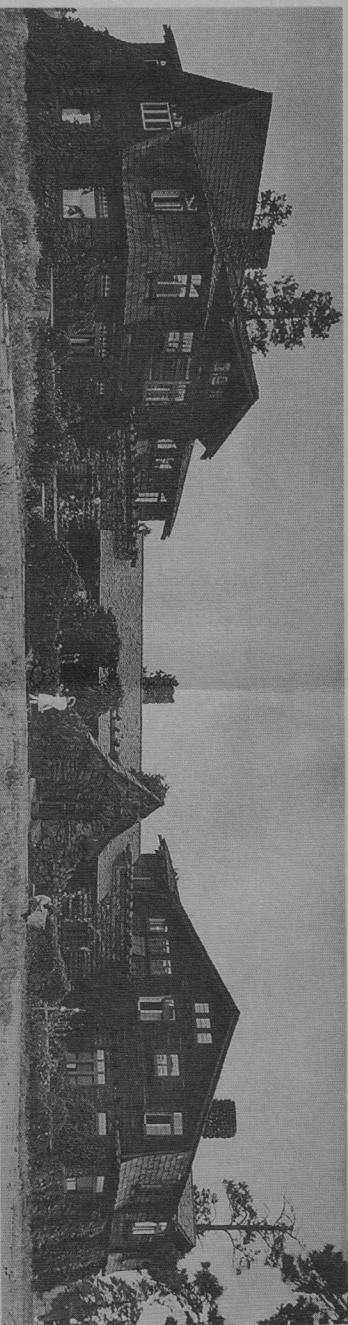
The Families & The Lumber Company

Timothy and Michael Riordan followed their older brother D.M. (Matt) Riordan west, initially taking jobs at the Ayer Lumber Company where Matt was General Manager. Matt purchased the Ayer Lumber Company in 1887 creating the Arizona Lumber Company which later became the Arizona Lumber & Timber Company. Matt and his brothers were very successful and as the largest employers in the area they contributed to the growth of early Flagstaff. Matt sold the mill to his younger brothers in 1897 and left Flagstaff.

Timothy and Michael decided to make Flagstaff their permanent home. Timothy married Caroline Metz in 1889 and a few years later Michael married her younger sister Elizabeth. The women were cousins of the Babbitt brothers, another influential Flagstaff family. Tim and Caroline had two daughters; Mike and Elizabeth had six children. The two families lived side by side adjacent to the lumber mill.



Tim and Caroline Riordan's dining room.



The design of Riordan Mansion, pictured circa 1910, promoted conversation and shared activities.

The Mansion

By 1903, with a successful business and growing families, Timothy and Michael decided to upgrade to new larger homes. They contacted Santa Fe Railroad architect Charles Whittlesey to design the houses. Duplex homes in the American Arts & Crafts style were created for the two families. Each family had approximately six thousand square feet of living space with all the modern amenities of the day. The two homes were connected by a large common room, which gave the families an area for relaxation, entertainment and plenty of space for the children to play.

The Riordan families lived out their years on their sides of the house with the second generation donating the homes and most of the original family furniture and belongings including pieces by Stickley and Tobey Furniture Company. Arizona State Parks acquired the east house in 1978 and began giving tours in 1983. The west house was acquired in 1986 and opened to the public in 2002.

The primary building material for the structure is Ponderosa pine. This type of tree formed the backbone of the Riordans' lumber business.



Building a Community

As business leaders and the largest employers in Flagstaff, the Riordan brothers were known for their efforts on behalf of the community. Their priorities revolved around supporting their business and the economic development of Flagstaff. In a new and growing frontier environment, this meant securing government services, attracting industry to diversify the economy, and making technological improvements for the community.

In keeping with their Catholic faith, middle-class origins, and Progressive era values, it also meant establishing medical care, churches, schools, and the infrastructure needed for a healthy community.

Learn more about how the Riordans contributed to Flagstaff by reading an excerpt from *Community Builders: The Riordan Families of Flagstaff* on our website.

Visit AZStateParks.com/Parks/RIMA and click on **Feature Story**.



Caroline, Alice Metz, Timothy, & Mary Riordan.