

La Posada (1930) was the last and most elegant of the great Fred Harvey Hotels built by the Santa Fe Railroad. It was designed by Mary Colter - perhaps the greatest architect of the Southwest - as a fabulous Spanish hacienda. Colter is famous for her magnificent buildings at the Grand Canyon, but La Posada was her favorite.

Mary Elizabeth Jane Colter (1869-1958) was a true American genius. Influenced by the Arts and Crafts movement - which emphasized fine arts and handicraft - over machine made items - Mary developed a love of fine design in all its forms. Through life-long study she became a master of light, color and materials. In 1910 she became chief designer and architect for the Fred Harvey company - an amazing achievement since women couldn't vote for President until 1920!



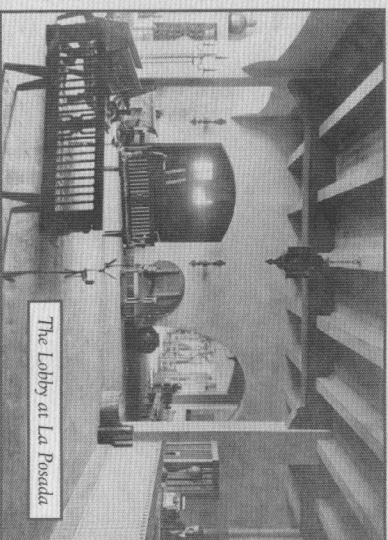
Mary Jane Colter

Fred Harvey civilized the west. He developed and ran all the hotels and restaurants of the Santa Fe Railway, eventually controlling a hospitality empire that spanned the continent. He introduced linen, silverware, china, crystal and impeccable service to railroad travel. He was so legendary that MGM made a movie about his hotels *The Harvey Girls* - starring Judy Garland.

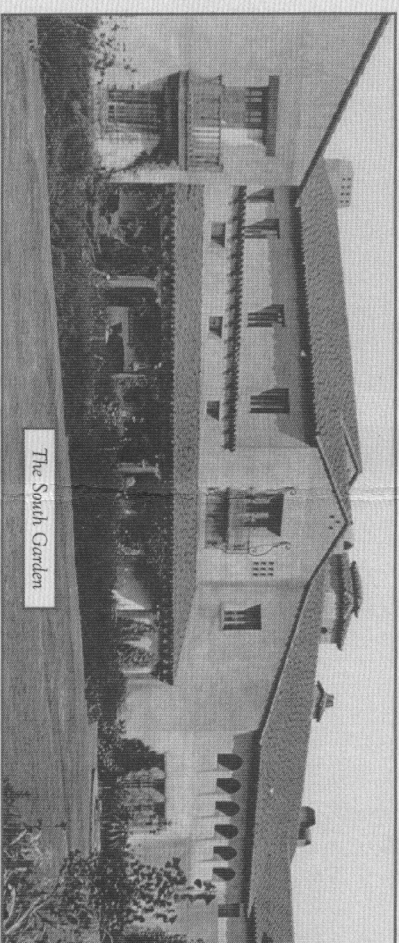


Fred Harvey

In 1927 the Santa Fe Railway and the Harvey family decided to build a major hotel in the center of Northern Arizona. La Posada - "the Resting Place" - was to be the finest in the Southwest. Construction costs exceeded \$1 million in 1929. Total budget with grounds and furnishings was rumored at \$2 million - about \$40 million in todays dollars. They chose Winslow - Arizona headquarters for the Santa Fe Railway - since everything to see and do in Northeast Arizona is a comfortable day's drive. They asked Mary Colter to design the new hotel. La Posada was the only project for which Mary was able to design the buildings, decorate the interiors, plan the gardens and oversee construction.



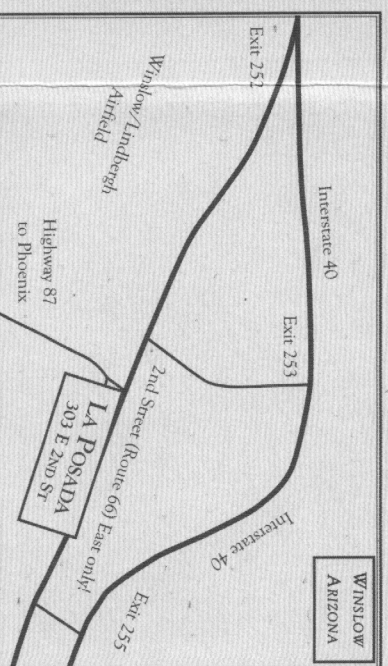
The Lobby at La Posada



The South Garden

THE LEGENDARY OASIS OF LA POSADA!

The original hotel had seventy guest rooms, three dining rooms, fancy lounges, restful arcades, splashing fountains and museum quality furniture. It was surrounded by acres of beautiful gardens with their own greenhouse, tennis courts, and a train station. It was the finest hotel on Route 66. Thousands of cars came by our front door. All the passenger trains from Los Angeles to Chicago stopped at La Posada. *Everybody* stayed here from Howard Hughes to John Wayne, Bob Hope to Dorothy Lamour, Albert Einstein to the Crown Prince of Japan. Winslow was the big town, bigger than Flagstaff and Sedona until the 1950's. Charles Lindbergh designed our airport - it's still here. But then folks got in too much of a hurry. People stopped riding trains. Planes flew farther and passed us by. Route 66 was bypassed and abandoned. La Posada closed in 1957 and was nearly torn down. In the 1960's it was gutted and made into offices. For decades La Posada and Historic Downtown Winslow with its Vaudeville Theater, Trading Posts, Airport, Museum, classic brick storefronts and small-town pace waited quietly to be rediscovered. Welcome back.



We created the WAT in 2011 to develop our vision for an arts community. This ambitious project will require several \$ millions of construction to create more than 20,000 square feet of exhibit and performance space. The three primary venues are:

- **The Route 66 Art Museum** The train station and east grounds of La Posada will feature artists along Rt. 66 from Chicago to Santa Monica. The Museum will be the gateway to our friend James Turrell's **Roden Crater**, the most famous piece of landscape art in the world. We plan to open the first phase of the Museum in 2013 with an exhibit of Turrell's work and models for the Crater spaces.
- **El Gran Art Garage** Paul Ruscak's ex-La Posada garage across 2nd street will host performance art from poetry to dance.
- **Snowdrift Art Space** Dan and AnnMary Lutzick's ex-Babbitt's Department Store three blocks west on 2nd Street will host changing exhibits from model trains to quilts and a permanent exhibit of Daniel Lutzick's sculpture.

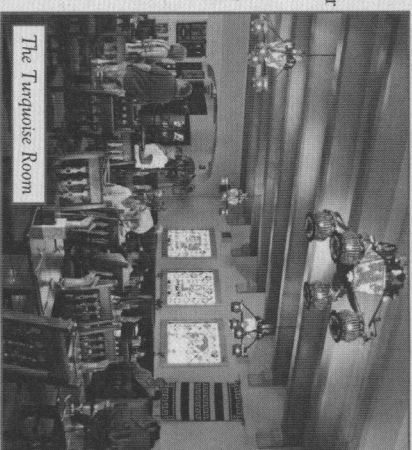
At La Posada we opened the **Mion Museum** in May 2011 showcasing the paintings of Tina Mion. Our lobby features rotating exhibits about regional history, and our new **WAT Exhibit Room** has models and drawings detailing future improvements to the hotel and the Route 66 Art Museum and grounds. We are planning a dining terrace for the Turquoise Room, a vineyard, a sculpture garden, historic train cars for guests to stay on, and a very special skyspace by James Turrell.

Plans and fundraising are underway. Want to help or be involved? Please contact Allan Affeldt: allan.affeldt@laposada.org

THE TURQUOISE ROOM AND MARTINI BAR

La Posada's beautiful dining room is once again the finest in the region. The Turquoise Room and Martini Bar are operated by renowned Chef John Sharpe and his talented crew. The menu features retro Fred Harvey specialties and Native American inspired nouvelle cuisine. Chef John uses locally grown herbs and vegetables and the finest fresh ingredients brought in daily. Breakfast, lunch and dinner: 7 A.M. - 9 P.M.

Please join us for one of the finest dining experiences in the Southwest. For reservations call 928-289-2888. www.theturquoiseroom.net



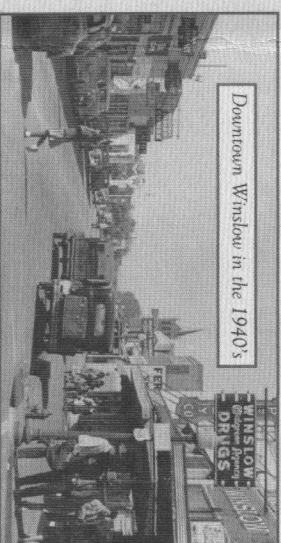
The Turquoise Room

WHAT TO DO HERE

Step back in time. Relax with a good book from our library. Explore the marvels of the region - Grand Canyon, Sedona, Navajo and Hopiland, Meteor Crater and Petrified Forest - all day trips from your La Posada home. Go rock climbing at Jacks Canyon or canoeing on spectacular Clear Creek. Visit the world famous Kaibito Dances, Painted Desert, Homolovi State Park and Rock Art Ranch. There is so much to explore in Northeastern Arizona. Come spend a few memorable days with us and get your kids in high style on Route 66.

HOW TO GET TO LA POSADA

La Posada is located at the intersection of U.S. Route 66 (now 2nd St, one way East) and Arizona Highway 87, 1 mile from Interstate 40. Distances (in miles): Flagstaff 53, Phoenix 185, Albuquerque 230, Las Vegas 300, Salt Lake City 485, Los Angeles 579, Denver 709, Chicago 1675. AMTRAK (Los Angeles - Chicago) stops twice daily at La Posada: www.amtrak.com For private planes Winslow-Lindbergh Airfield is a five minute taxi ride.



Downtown Winslow in the 1940's

WHAT'S NEXT? THE WINSLOW ARTS TRUST! (www.winslowartstrust.org)